

TECHNICAL NOTES

Wagg &Purr[®] CARBODOTE[®] Prime



Composition

Activated charcoal (30%), glycerine, sodium sulphate (6.25%), preservative.

Analytical Constituents

Crude protein 0.3%
Crude oils and fats 0.1%
Crude fibre 35.4%
Crude ash 6.0%
Moisture 45.8%

Actions

Wagg & Purr[®] CARBODOTE Prime is a ready-to-use suspension of activated charcoal plus a saline cathartic in glycerine. Activated charcoal coats the gastrointestinal wall and adsorbs toxins, thus reducing their availability for absorption into the systemic circulation. Sodium sulphate acts as a cathartic, speeding up gastrointestinal transit times and permitting rapid elimination of adsorbed toxins (and reducing the opportunity for toxin desorption from the charcoal).

Species

CARBODOTE Prime can be used for dogs and cats.

Precautions

CARBODOTE Prime should only ever be used as a single administration. The use of cathartics is not recommended in patients with clinical dehydration, hypotension, diarrhoea, gastrointestinal obstruction, perforation or ileus, or electrolyte abnormalities. Use with caution in patients with pre-existing renal or cardiac disease. Due to their small size, do not use cathartics in exotic pets. In patients where cathartic use is inappropriate, substitute CARBODOTE Prime for CARBODOTE Repeat.

Contraindications

SITUATIONS WHERE ACTIVATED CHARCOAL IS CONTRAINDICATED OR OF LITTLE BENEFIT

CARBODOTE Prime should not be administered if a patient has potential gastrointestinal injury or perforation or is likely to be presented for gastrointestinal surgery, or if there is either intestinal obstruction or recurrent vomiting. It should not be administered by mouth if a patient has compromised airway protective reflexes or impaired consciousness.

CARBODOTE Prime is contraindicated as a treatment for ingestion of corrosive substances (acids and bases), liquid hydrocarbons and surfactants.

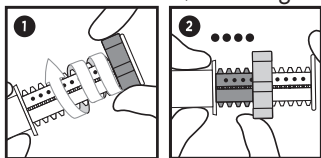
CARBODOTE Prime is unlikely to be of benefit in cases of ingestion of the following chemical groups:

- Alcohols
- Inorganic salts
- Metals
- Organic solvents (e.g. acetone)
- Cyanides

Instructions for Use

For oral use. Best administered within 1 hour of toxin ingestion.

1. Before first use, wind ring as shown in Figure 1, until the desired amount is visible between the barrel and the ring (Figure 2).



2. Remove cap and administer the product directly into the animal's mouth (Figure 3)



CARBODOTE Prime should only ever be used as a single administration. One dot (•) corresponds to 7.8 g of product. Administer the amount of product according to the following table:

Animal's weight (kg)	Number of dots
≤ 2	1 ●
2.1 - 4	2 ●●
4.1 - 6	3 ●●●
6.1 - 8	4 ●●●●
8.1 - 10	5 ●●●●●
10.1 - 12	6 ●●●●●●
12.1 - 14	7 ●●●●●●●
14.1 - 16	8 ●●●●●●●●
16.1 - 18	9 ●●●●●●●●●
18.1 - 20	10 ●●●●●●●●●●

Additional Usage Information

Always exercise caution and monitor hydration status when using cathartics. When repeated use of charcoal is necessary, follow up with CARBODOTE Repeat.

CARBODOTE Prime may interfere with the absorption of medications. Allow 3 hours between the administration of the product and any other oral treatments.

Activated charcoal will cause the stools of the animal to turn black. Stools and the product itself may stain textiles.

Activated charcoal has been shown, either *in vitro* or *in vivo*, to adsorb the following medications, toxins and poisons:

Medications

ACE Inhibitors¹

Amphetamine³

Anticoagulants⁵

Antidepressants (except lithium)³

Antihistamines³

Anti-epileptics³

Anxiolytics/neuroleptics³

Beta-blockers³

Diuretics³

Levothyroxine¹⁶

Loperamide¹⁷

NSAIDs*¹⁸

Opioids³

Oral antidiabetics³

Paracetamol³

Telmisartan¹⁹

Chemical Toxins

Fipronil⁶
Glyphosate⁸
Metaldehyde¹³
Neonicotinoids¹⁰
Pyrethroids¹¹
Theobromine (chocolate)*²
Vitamin D3 and derivatives¹⁵

Phytotoxins

Allium (onion/garlic)²
Cannabis*⁴
Cyanobacteria⁷
Grapes/Raisins²
Lily*⁹
Macadamia Nuts
Mushrooms (amatoxin)*¹²
Mycotoxins – ergotamine*³
Nicotine³
Nightshade/Digitalis¹⁴

* Indicates that these compounds may undergo enterohepatic recycling; repeat dosing 4-6-hourly with CARBODOTE Repeat may be beneficial.

Abbreviated References

(full references available on request)

1. Herman L, et al., 2020.
2. Cortinovis C, Caloni F. 2016.
3. Zellner T, et al., 2019.
4. Meola SD. 2012.
5. Tummala R, et al., 2016.
6. Fipronil toxicity, poisoning, intoxication, antidote, toxicity. Parasitipedia.net.
7. Rankin K, et al., 2013.
8. Mahendrakar K, et al., 2014.
9. Bennett AJ, Reineke EL. 2013.
10. Selvam V, Srinivasan S. 2019.
11. Ramchandra AM, et al., 2019.
12. Lee J. 2015.
13. Bergamini I, et al., 2020.
14. Brockstedt M, Hoffmann-Walbeck P. 1993.
15. Schell M, Khan S. 2014.
16. Medeiros-Neto G. 2020.
17. Arnold C, Martinez CJ. 2019.
18. Koenigshof AM, et al., 2015.
19. PubChem. 2021.

Additional Reference

A review, freely available online, was published by Zellner et al., (2019):

Zellner, T., Prasa, D., Färber, E., Hoffmann-Walbeck, P., Genser, D., Eyer, F., 2019. The use of activated charcoal to treat intoxications. Dtsch. Aerzteblatt Online.

<https://doi.org/10.3238/arztebl.2019.0311>.

Safety Data Sheet

For Safety Data Sheet see www.avet.health

Presentation

78 g gel in a dispensing syringe

Disposal

Dispose of empty container thoughtfully.

Storage

Store at room temperature (30 °C). Once opened, use promptly. Discard product opened for more than 1 month.

Wagg & Purr[®] is a registered trade mark of AVet Health Ltd.
CARBODOTE is a registered trade mark of Domes Pharma SC